

# GCM

GULF CONSTRUCTION MACHINERY  
جلف للمعدات الإنشائية

**HD** HYUNDAI  
CONSTRUCTION EQUIPMENT

**LINCOLN**  
ELECTRIC



**WACKER  
NEUSON**  
*all it takes!*

**MB**  
THE CRUSHING EVOLUTION

**SIMEX**  
HEAVY MADE EASY

**DAEWO**

**M3**





## About Us

Established in 2005 and headquartered in Doha, Gulf Construction Machinery (GCM) is a leading provider of heavy equipment solutions across multiple industries, including construction, mining, oil and gas, and infrastructure development. With over 20 years of experience, GCM has built a reputation for delivering high-quality, durable, and efficient machinery designed to tackle the toughest operational challenges.

As a trusted supplier, we offer a comprehensive range of products and services that cater to diverse industry needs. Our extensive expertise ensures that we provide our clients with state-of-the-art machinery, professional support, and tailored solutions to optimize performance and productivity.

## **Mission**

At GCM, our mission is to empower industries by providing top-quality machinery, innovative power solutions, and reliable rental services. We are dedicated to delivering efficiency, sustainability, and excellence in every project we support, ensuring our clients' success.

## **Vision**

Our vision is to be the most trusted and sought-after provider of heavy equipment solutions in the Middle East, continuously expanding our reach, enhancing our services, and driving innovation in the industry.

## **Core Values**

**Integrity:** We uphold the highest standards of professionalism and honesty in all our business dealings.

**Quality:** We are committed to providing superior products and services that exceed client expectations.

**Innovation:** We embrace cutting-edge technology to enhance operational efficiency and project outcomes.

**Customer Satisfaction:** Our clients are at the heart of everything we do, and we strive to deliver tailored solutions that meet their unique needs.

**Sustainability:** We promote environmentally responsible practices in our equipment and operations.







HD Hyundai Construction Equipment is a global general construction equipment company. It was launched in 1985 as the Heavy Machinery Division of Hyundai Heavy Industries with the mission of creating a safe and solid foundation for people's lives based on its deep understanding of humanity and innovative cutting-edge technology.

With around 405 subsidiaries and dealers in 129 countries, including the United States, the EU, and China, we manufacture and supply a variety of construction equipment such as excavators, wheel loaders, and backhoe loaders. We are growing into a global leader that will set the standard for the construction equipment market through technological innovation and development.



**Crawler Excavator**



**Wheel Loader**



**Skid Loader**



**Backhoe Loader**



**Grader**



**Wheel Excavator**



Lincoln Electric was founded on December 5, 1895, in Cleveland, Ohio, U.S.A. What started as a spark of ingenuity flickered and gained momentum. By 1911, John C. and James F. Lincoln invented and launched their first variable voltage arc welder, an innovation that catapulted Lincoln Electric into a new technology and industry that would drive its future success.

125-years later, Lincoln Electric has become the global leader in arc welding and cutting, and is renowned as The Welding Experts® worldwide. With the industry's leading team of experts and most comprehensive portfolio of solutions, we continue to advance innovation and deliver measurable value to our customers and their operations. We also remain true to our guiding principle, "The Golden Rule," and share a purpose of operating by a higher standard to build a better world. By aligning all of our stakeholders' interests through our unique, performance-based incentive management system, we continue to generate value and pursue long-term success.



**STT/HF TIG /MIG /MAG Machine**



**Engine Driven Machine**



**Welding Consumables**



**CNC PLASMA CUTTING**



**CNB WELDING MACHINE**



**MIG/MAG welding Machine**



At Hyundai, we're committed to delivering greater value in every piece of equipment we manufacture. From our heavy-duty diesel models to our Class III pallet jacks, you'll find exclusive features and performance advantages that result in greater reliability, outstanding operator comfort, greater fuel economy, and durability that will endure for years.

Whatever your application, there is Hyundai forklift to meet your specification and exceed your expectations.

Hyundai offers a wide range of forklifts for key industry sectors. While each forklift offers unique advantages, all Hyundai forklifts are designed and manufactured to deliver years of dependable service, low cost of ownership, and maximum operator comfort and productivity.

From factories to food & beverage to forestry, you'll find Hyundai forklifts at work in diverse industries around the world.







For Over three decades, we have constantly developed future oriented hydraulic attachment to meet changing attachment market requirements. Always with our passion in mind, we work with customers, end-users and suppliers to produce innovative solutions and to achieve customer satisfaction as quickly and efficiently as possible. Our continuous efforts on R&D, vast field experience and producing know-how characterize our quality products and secure our position as one of the leading hydraulic attachment manufactures in Korea.

This is how we constantly innovate ourselves and keep our position alive.



**HYDRAULIC BREAKERS**



**DEMOLITION ATTACHMENTS**



**HANDLING ATTACHMENTS**



**RECYCLING ATTACHMENTS**



**QUICK COUPLERS**



For over 20 years MB CRUSHER has been designing and manufacturing attachments for heavy equipment regardless of size. Perseverance and resilience led the company to invent the first jaw crusher for excavators. Investing in technology research contributed to the development of MB's products that can be installed on any carrier machine, turning them into real mobile crushers while improving the machine's performance and allowing companies to use the resources available in their job sites.

MB CRUSHER has evolved over the years and has become the benchmark for the construction equipment industry around the world today. With a full range of products to give companies the solutions that they are looking for.



**SCREENING BUCKETS**



**CRUSHER BUCKETS**







We offer customers across the globe a broad portfolio of construction machines and equipment, spare parts and services. Reliability and innovation have been the hallmarks of the Wacker Neuson brand from the company's inception back in 1848. Our sales and service stations, international production locations and network of dealers keep us close to our customers – no matter where they are in the world. A wide range of industries rely on Wacker Neuson's innovative solutions, including the construction, gardening and landscaping, municipal and industrial sectors.

We are the original, when it comes to compaction. We had invented the rammer back in 1930 and continue to be innovative in the field of compaction with a lot of passion.



**ELECTRIC RAMMERS**



**VIBRATORY PLATES**



**TANDEM ROLLER**



**CONCRETE TECHNOLOGY**



**LIGHTING**



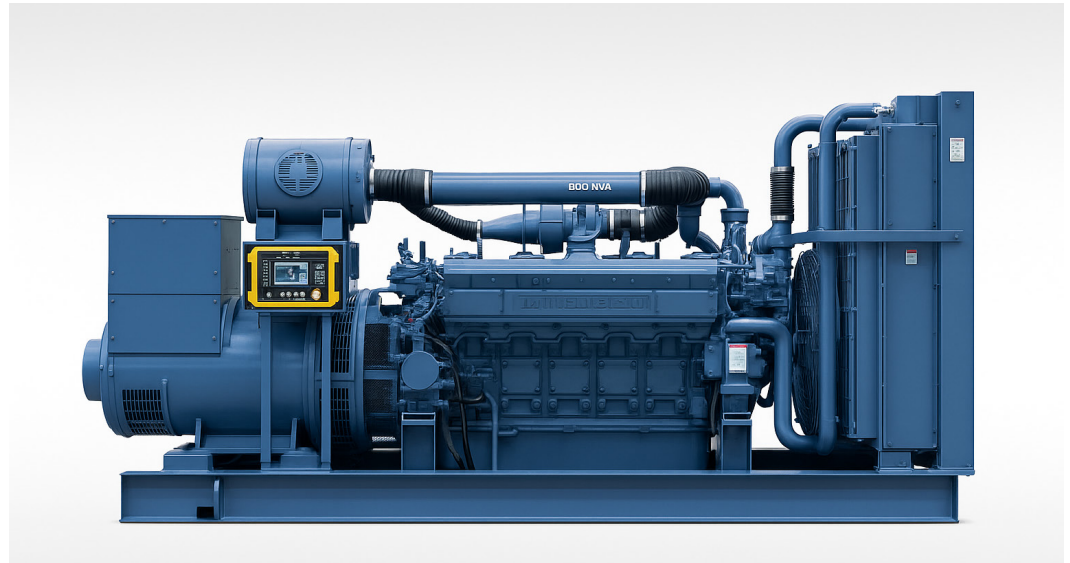
**WALK-BEHIND ROLLERS**

## Power Projects Division (PPD)

Gulf Construction Machinery – Power Projects Department also known as (GCMPPD), present as one of the leading companies in the Supply, Testing, Commissioning, Installation, Rental, Maintenance of Diesel Power Generators, UPS, Center Battery System, Batteries, Bus bar Raisers and Fuel Oil / Transfer Systems in State of Qatar. We consider ourselves as one of the best solution provider by delivering one of the best contracting & Maintenance services in the State of Qatar. We owe our success to our hardworking, highly skilled and committed employees.

Our core focus lies in providing customized integrated products and services with well-established infrastructure, equipment, manpower to support and provide the turnkey solutions for various industries and different sectors of Markets. We provide the latest in power generator technology equipment, allowing us to give our customers the best product and the best possible services.

Our objective is to serve customers to their utmost by providing them with the best-in-class electric generators, UPS reliable door to door delivery, and after sales service at competitive market prices. We continue to build our solid reputation for excellence and response.





## Rental Division

We are a leading equipment rental service company in QATAR, with the capability of providing equipment rental related solutions and value-added services to our customers. We focus on Construction, Electrical & Mechanical Engineering and Infrastructure, which include Heavy Equipment and Power Generators.

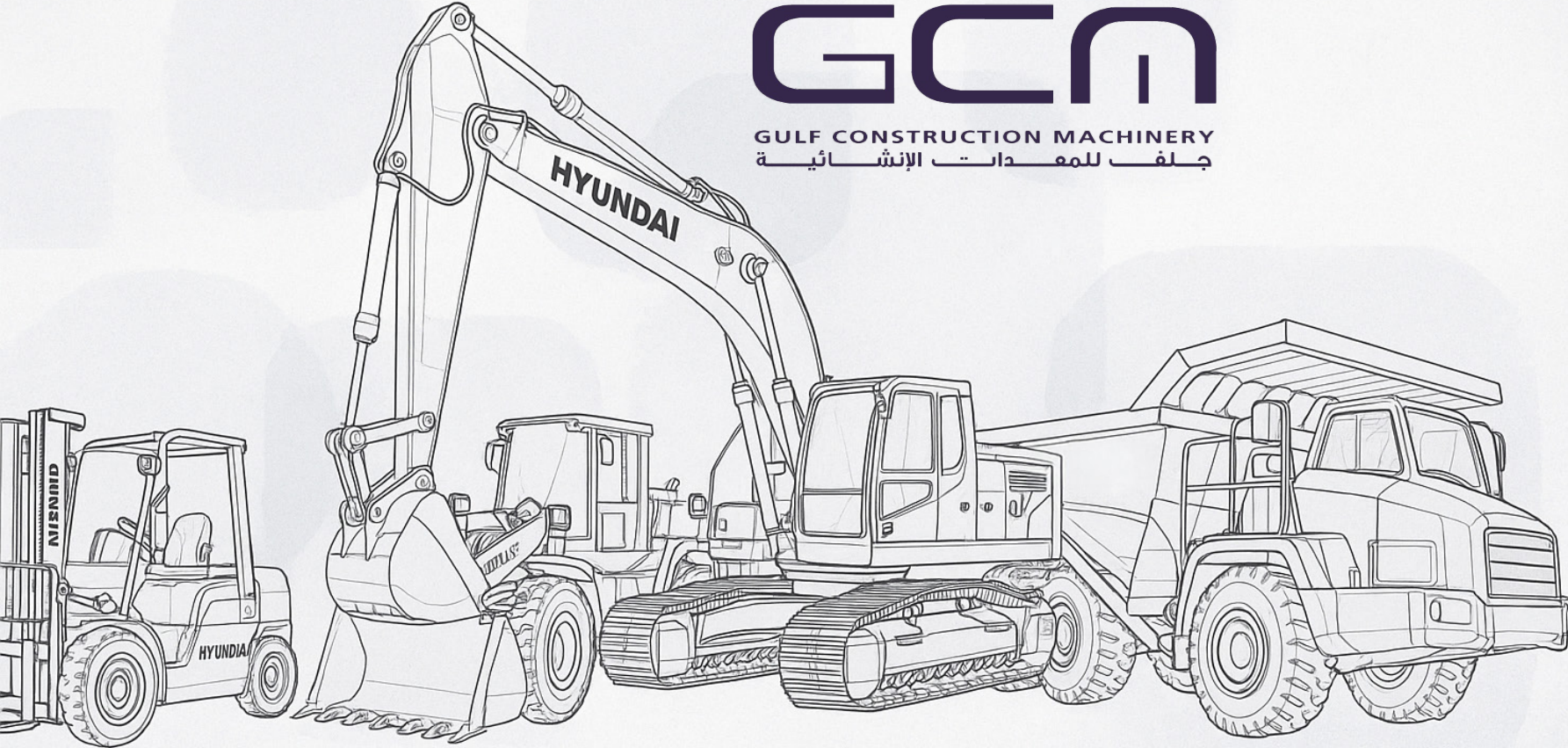
Over 10 years of experience in the industry, we possess in-depth knowledge of the equipment rental market in QATAR and have established strong and strategic relationships with our major suppliers and a large customer base. We have grown through different phases of the QATAR economy to become a major player in the equipment rental industry and have participated in numerous large landmark construction projects. These include some of the Major Projects in QATAR (namely the DOHA METRO, MUSHERIB, ORBITAL HIGHWAY, HAMAD PORT,.)





# GCM

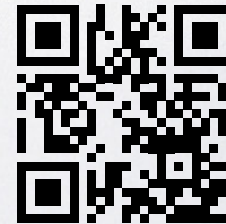
GULF CONSTRUCTION MACHINERY  
جلف للمعدات الإنشائية



Gulf Construction Machinery  
Jery Al Sumar Logistic Park, Doha, State of Qatar

Tel: +974 4480 8814  
+974 4486 8299

Email: [Sales@gcmqatar.com](mailto:Sales@gcmqatar.com)



 **HD** HYUNDAI  
CONSTRUCTION EQUIPMENT

**LINCOLN**  
ELECTRIC



**WACKER  
NEUSON**  
*all it takes!*

**MB**  
THE CRUSHING EVOLUTION

**SIMEX**  
HEAVY MADE EASY

**DAEMO**

**M3**